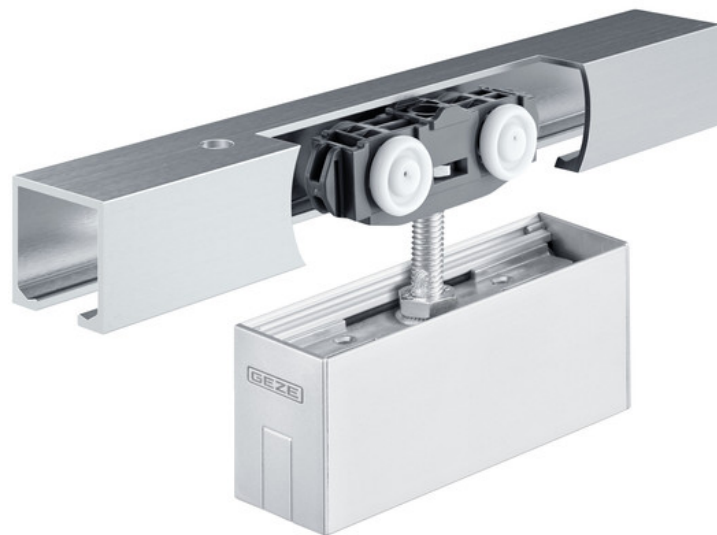


Product data sheet

Rollan 80 NT complete set *



Sliding door fitting for glass leaves

AREAS OF APPLICATION

- For glass leaves with a 30 mm glass clamping plate
- For leaf weights up to 80 kg
- For wall installation

Rollan 80 NT complete set *



PRODUCT FEATURES

→ Sliding door fitting for glass leaves with up to 80 kg leaf weight

TECHNICAL DATA

Productname	Rollan 80 NT complete set *
Leaf material	Glass, Plastic, Metal, Wood
Leaf weight (max.)	80 kg
Leaf weight (max.) with draw-in damper	40 kg
Number of leaves	1-leaf, 2-leaf
Test cycles	50000
Corrosion protection class	1
Glass thickness	8 - 10 mm
Type of installation	Wall, Ceiling
Access for all	according to DIN 18040

VARIANTS / ORDER INFO

Designation	Description	Ident-No.	Leaf width (min.)	Leaf width (max.)	Glass thickness
GEZE Rollan 80 NT complete set	Set for wall and ceiling installation with glass leaf, 30 mm glass clamping plate individually covered EV1, up to 80 kg leaf weight -ball bearing-	160423	500 mm	970 mm	8 - 10 mm

* The products designated above may vary in form, type, characteristics, function, or availability depending on the country. Please get in touch with your GEZE contact person if you have any questions.