

# Product data sheet

# Perlän 140 set for timber leaves



Sliding door fitting for glass leaves with up to 140 kg leaf weight

#### AREAS OF APPLICATION

- Suitable for sliding leaves up to 140 kg
- Suitable for interior use

# Perlan 140 set for timber leaves



## PRODUCT FEATURES

→ Sliding door fitting for timber leaves and ceiling installation

## TECHNICAL DATA

Productname	Perlan 140 set for timber leaves
Leaf material	Glass, Plastic, Metal, Wood
Leaf weight (max.)	140 kg
Leaf weight (max.) with draw-in damper	80 kg
Test cycles	100000
Corrosion protection class	2
Type of installation	Wall, Ceiling
Telescope	Yes
Automated	Yes
Side panel	Yes
Colour	EV1

## VARIANTS / ORDER INFO

Designation	Description	Ident-No.	Colour	Leaf width (min.)	Leaf width (max.)
Perlan 140 set for timber leaves	For ceiling installation with standard suspension plate, up to 140 kg leaf weight	119354	EV1	500 mm	1040 mm
Perlan 140 set for timber leaves	For ceiling installation with standard suspension plate, up to 140 kg leaf weight	119355	EV1	500 mm	1240 mm
Perlan 140 set for timber leaves	For ceiling installation with standard suspension plate, up to 140 kg leaf weight	119353	EV1	500 mm	840 mm
Perlan 140 set for timber leaves	For ceiling installation with standard suspension plate, up to 140 kg leaf weight	119356	EV1	500 mm	1440 mm
Perlan 140 set for timber leaves	For ceiling installation with standard suspension plate, up to 140 kg leaf weight	119357	EV1	500 mm	1640 mm

# Perlan 140 set for timber leaves



## PART

### FLOOR GUIDE FOR WOODEN LEAF

Floor guide for wooden leaves mounted on the floor



Designation	Description	Ident-No.	Colour
Floor guide for timber leaf standard	Without attachment material	002191	Galvanised

### END STOP PERLAN 140 (ALSO KS)

End stop for sliding leaves also suitable for outdoor use



Designation	Description	Ident-No.
End stop Perlan 140 (also KS)	Steel parts made of stainless steel	119362

### END CAP PERLAN TRACK

End cap Perlan track



Designation	Ident-No.	Colour
End cap Perlan track	119649	black

### HOLD-OPEN SPRING

Hold-open spring for Perlan 140 end stop



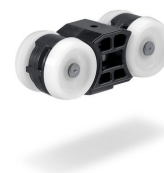
# Perlan 140 set for timber leaves



Designation	Ident-No.
Hold-open spring	064242

## ROLLER CARRIAGE WITHOUT SUSPENSION BOLT

Roller carriage for leaf weights up to 140 kg



Designation	Description	Ident-No.
Roller carriage without suspension bolt	up to 140 kg leaf weight	064248

## TRACK PERLAN 140

Track for sliding door fitting



Designation	Description	Ident-No.	Colour
Track Perlan 140	with countersunk drill holes (prepared for Perlan SoftStop)	142518	EV1
Track Perlan 140	with countersunk drill holes (prepared for Perlan SoftStop)	128660	EV1
Track Perlan 140	with countersunk drill holes (prepared for Perlan SoftStop)	128662	Stainless steel optic
Track Perlan 140	with countersunk drill holes (prepared for Perlan SoftStop)	135061	Stainless steel optic
Track Perlan 140	with countersunk drill holes (prepared for Perlan SoftStop)	135048	EV1
Track Perlan 140	with countersunk drill holes (prepared for Perlan SoftStop)	135050	Stainless steel optic
Track Perlan 140	with countersunk drill holes (prepared for Perlan SoftStop)	135049	Stainless steel optic
Track Perlan 140	with countersunk drill holes (prepared for Perlan SoftStop)	135047	EV1
Track Perlan 140	with countersunk drill holes (prepared for Perlan SoftStop)	142519	EV1
Track Perlan 140	with countersunk drill holes (prepared for Perlan SoftStop)	135046	EV1