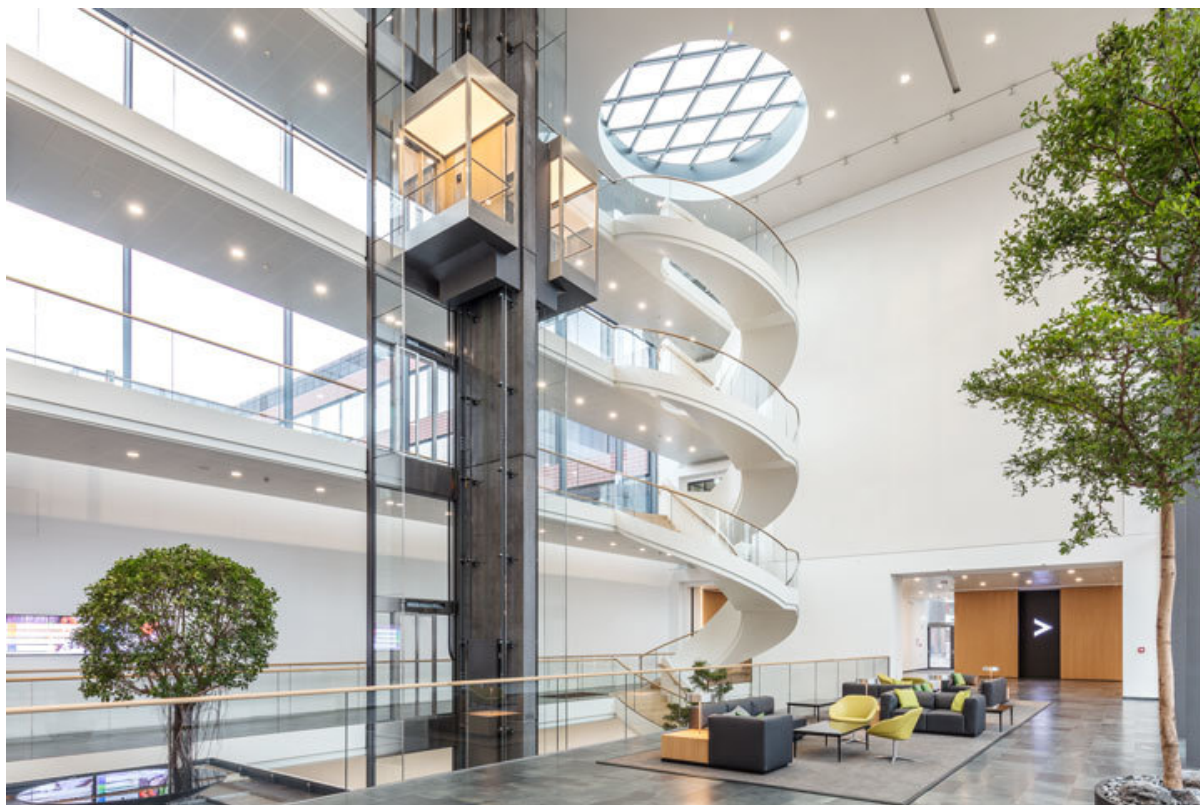


Product data sheet

Standard leaf bracket

for E 170 *



For rectangular windows

AREAS OF APPLICATION

- Installation on wooden, PVC or metal windows
- Leaf installation
- One leaf bracket is required per scissor

Standard leaf bracket for E 170 *



PRODUCT FEATURES

→ Serves to hang the scissors and as a connection between leaf and frame

TECHNICAL DATA

Productname Standard leaf bracket for E 170 *

VARIANTS / ORDER INFO

Designation	Description	Ident-No.	Colour
Standard leaf bracket for E 170 *	suitable for E 170	128925	EV1
Standard leaf bracket for E 170 *	suitable for E 170	128927	according to RAL
Standard leaf bracket for E 170 *	suitable for E 170	128926	white RAL 9016

* The products designated above may vary in form, type, characteristics, function, or availability depending on the country. Please get in touch with your GEZE contact person if you have any questions.